

Global Focus on Knowledge

Changing Cities 4

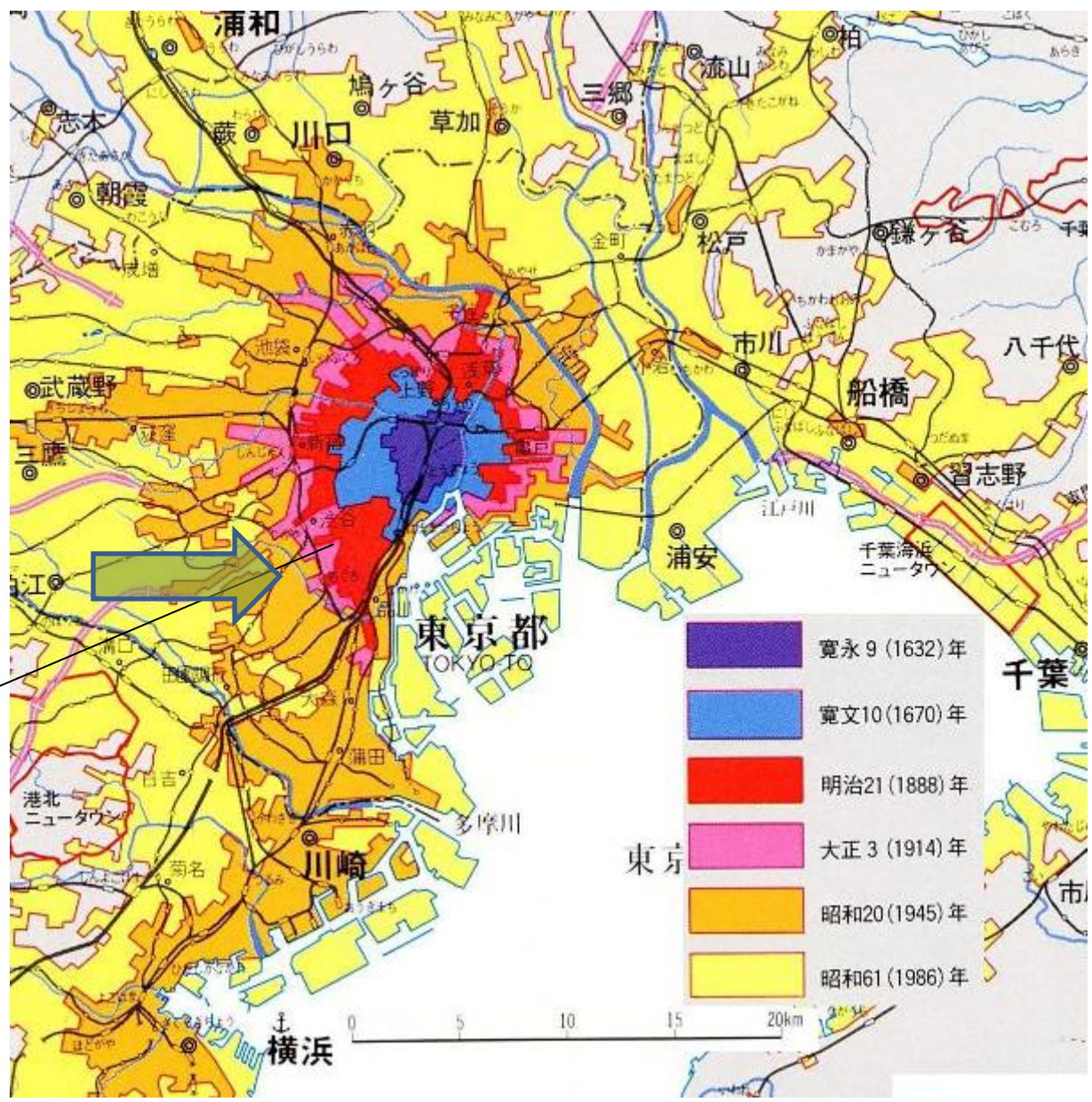
Factories in cities

April 30, 2008

Jun Suzuki, Department of Japanese History, Faculty of Literature

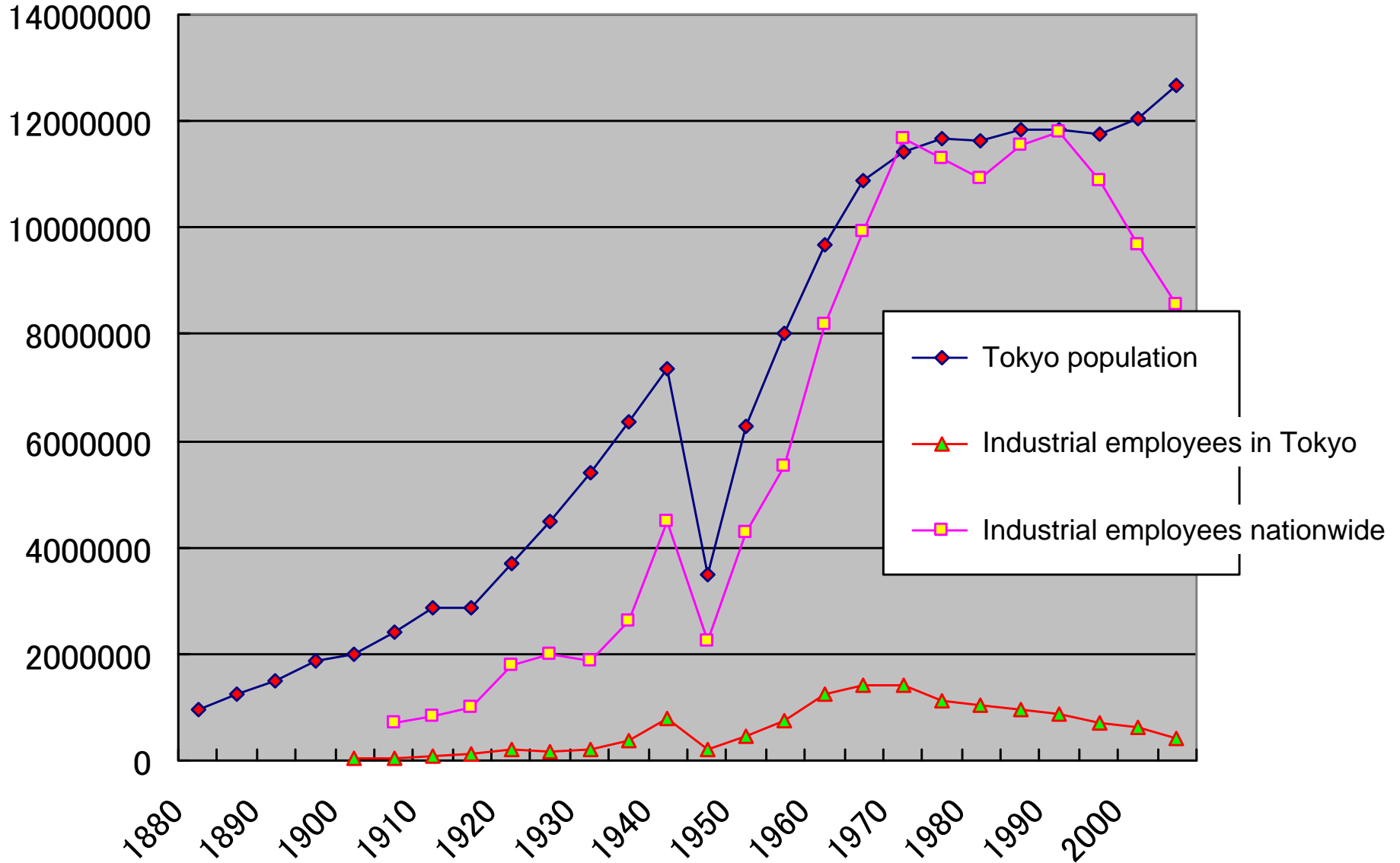
‡: The figures, photos and moving images with ‡marks attached belong to their copyright holders. Reusing or reproducing them is prohibited unless permission is obtained directly from such copyright holders.

Watermill at Onden Katsushika Hokusai 36 Views of Mount Fuji

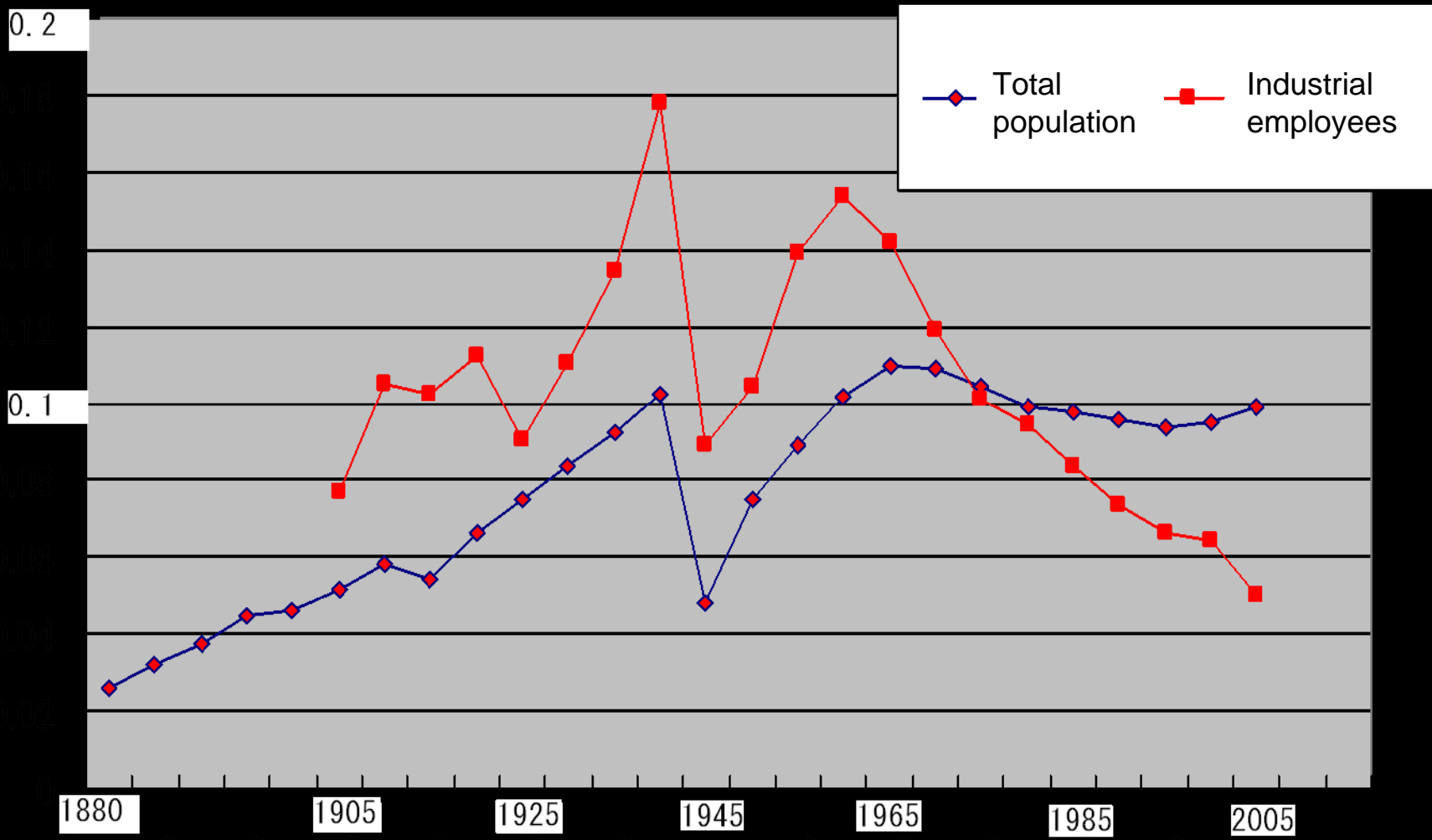


‡ “Chizu de yomu Edo~Tokyo (Analyzing Edo and Tokyo Through Atlas)” Yasuo Masai (Heibonsha, 1986)

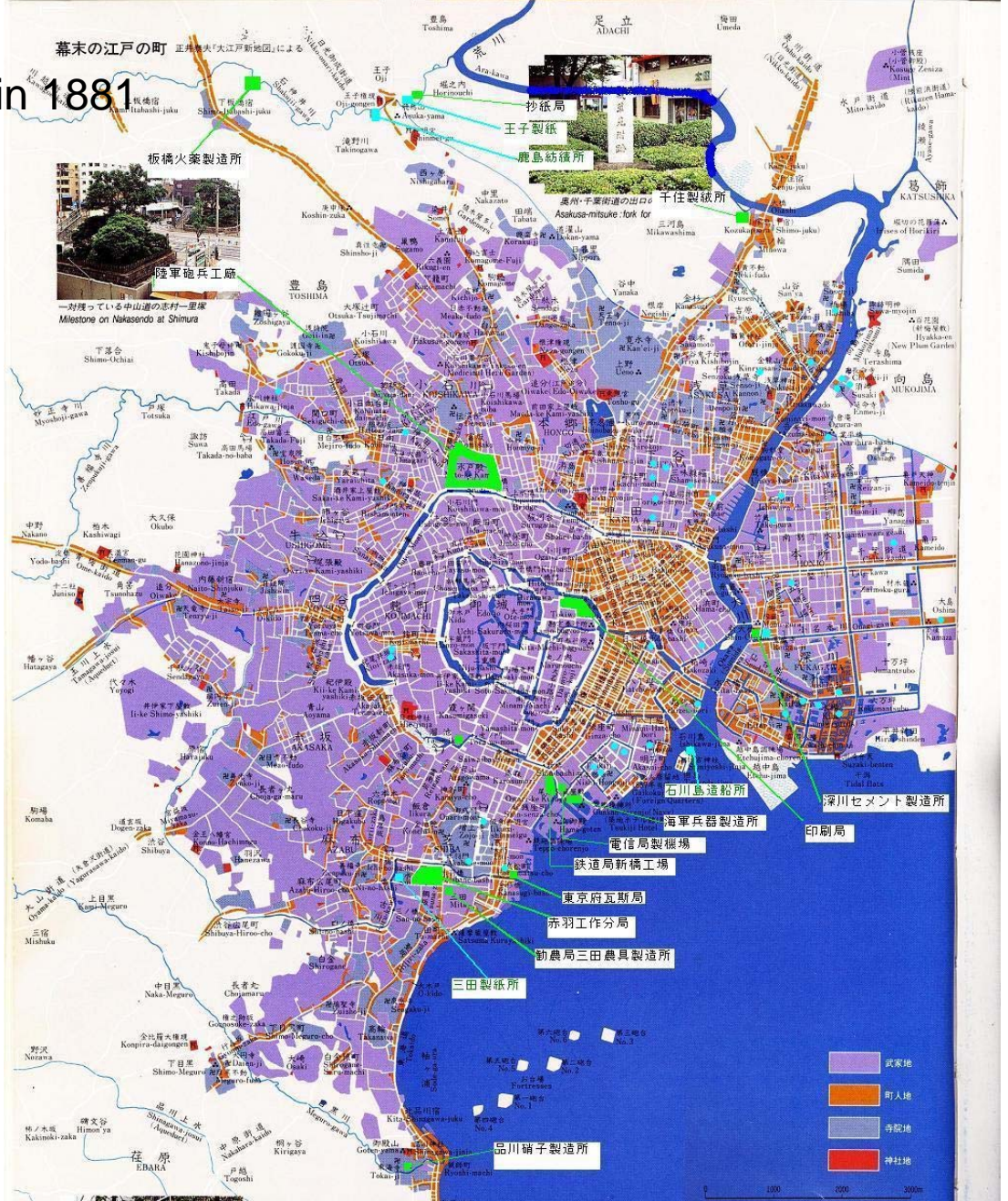
Tokyo population and number of employees engaged in industry in Japan and Tokyo



Importance of Tokyo (Proportion held by Tokyo and nationwide)



Government and private factories in 1881



‡ “Chizu de yomu Edo~Tokyo (Analyzing Edo and Tokyo Through Atlas)” Yasuo Masai (Heibonsha, 1986)

Printing Bureau



‡ From *Koshashin de Miru Edo kara Tokyo* (From Edo to Tokyo in Old Photographs), edited by Takeshi Ozawa and Masao Suzuki (Sekai Bunkasha, 2001)

Tokyo artillery arsenal



‡ From *Koshashin de Miru Edo kara Tokyo*
(From Edo to Tokyo in Old Photographs),
edited by Takeshi Ozawa and Masao Suzuki
(Sekai Bunkasha, 2001)

Tomioka Silk Mill (Tomioka City, Gunma Prefecture)

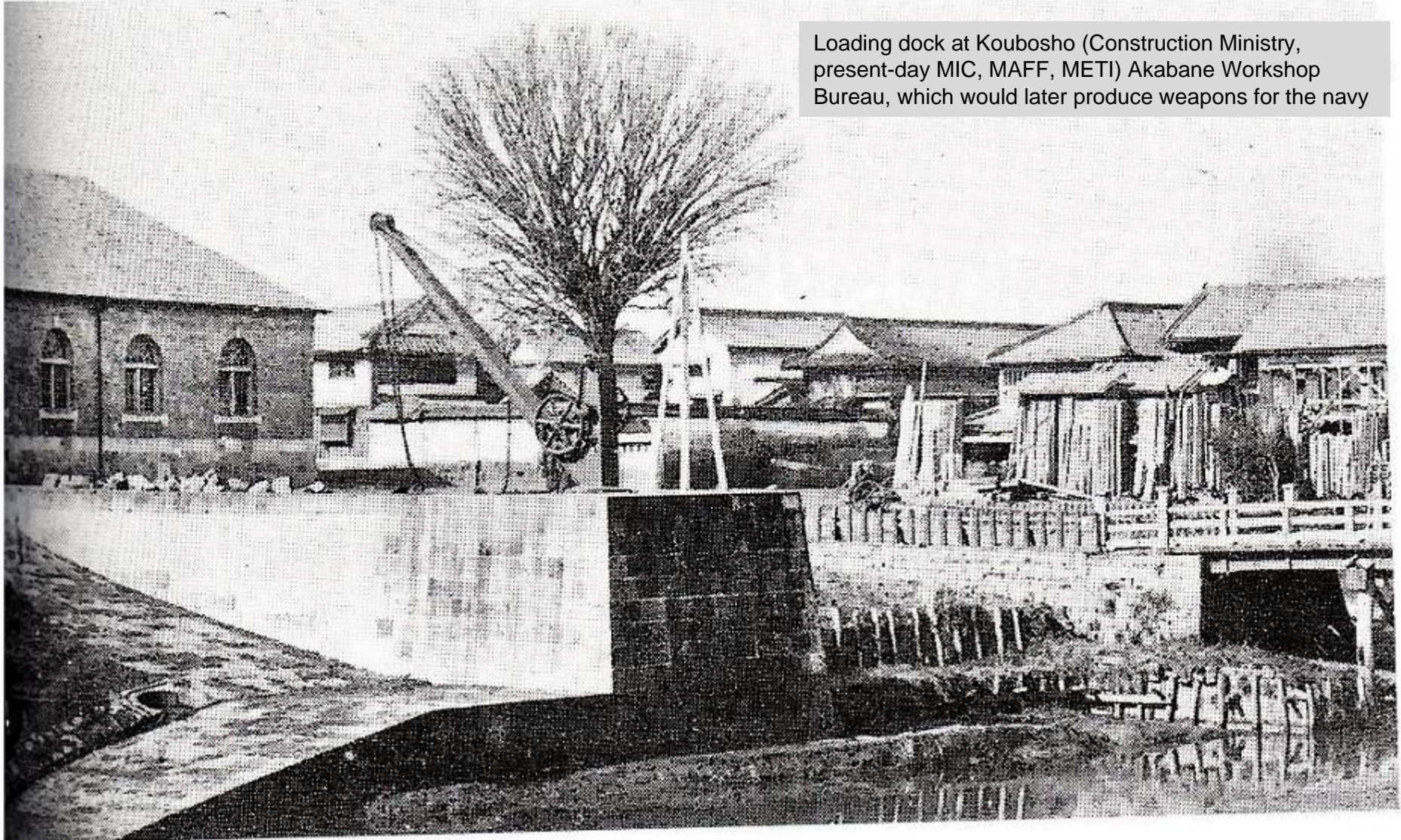




明倫堂

Akabane Workshop Bureau

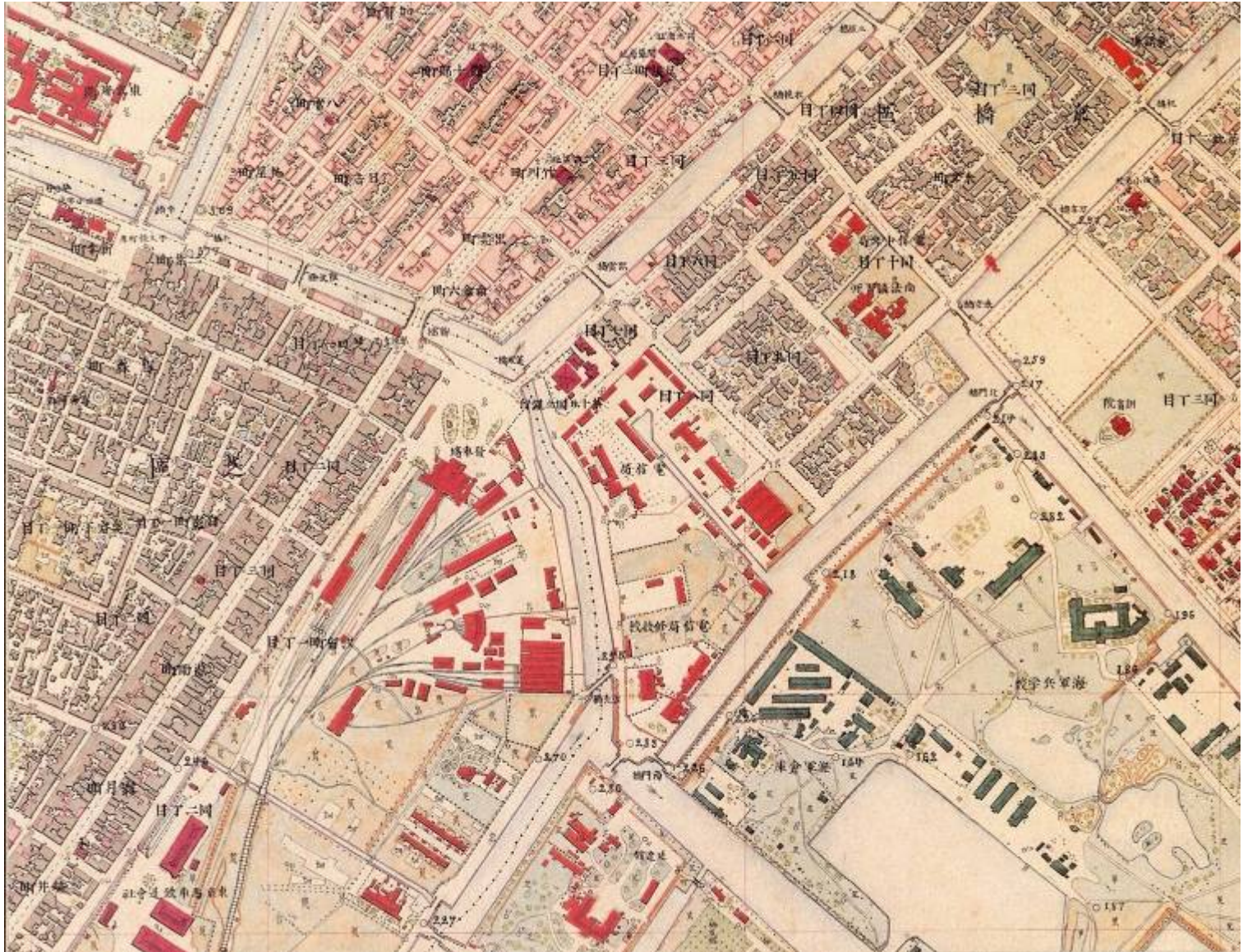
Loading dock at Koubosho (Construction Ministry, present-day MIC, MAFF, METI) Akabane Workshop Bureau, which would later produce weapons for the navy



‡ From *Koshashin de Miru Edo kara Tokyo* (From Edo to Tokyo in Old Photographs), edited by Takeshi Ozawa and Masao Suzuki (Sekai Bunkasha, 2001)

Shimbashi Station vicinity 1884

Original Tokyo survey map 1:5,000 scale



‡ “1:5,000Tokyo zusokuryo genzu(A map of Tokyo with a scale of 1 to 5,000) “ Japan Map Center, 1884

‡Geospatial Information Authority of Japan



‡ Former Shimbashi Terminal Station building, restored in 2003

<http://ja.wikipedia.org/wiki/ファイル:Kyu-shimbashi.JPG>

Ginza Renga-gai (street lined with brick buildings)
Looking toward Kyobashi from the 4-chome intersection



The Far East June 1874 Bunmei Kaika no Yokohama – Tokyo (Westernization of Yokohama – Tokyo) Museum of Yokohama Urban History, Yokohama Archives of History (Yurindo, 2007)

Shimbashi Factory of the former Japan Railway Bureau
(Machinery Hall where locomotives were repaired)
Built 1872, additions made in 1882



‡Meijimura Foundation『Museum Meiji-Mura』 Nagoya Railroad Co.,Ltd.

明治村所在 旧新橋鉄道工場の鉄柱



Property of Museum Meiji-Mura
Steel beams from the former Shimbashi railway factory

Glass Factory in Shinagawa

Formerly located in Kita-shinagawa, Shinagawa Ward, Tokyo Built 1877



‡Meijimura Foundation『Museum Meiji-Mura』 Nagoya Railroad Co.,Ltd.

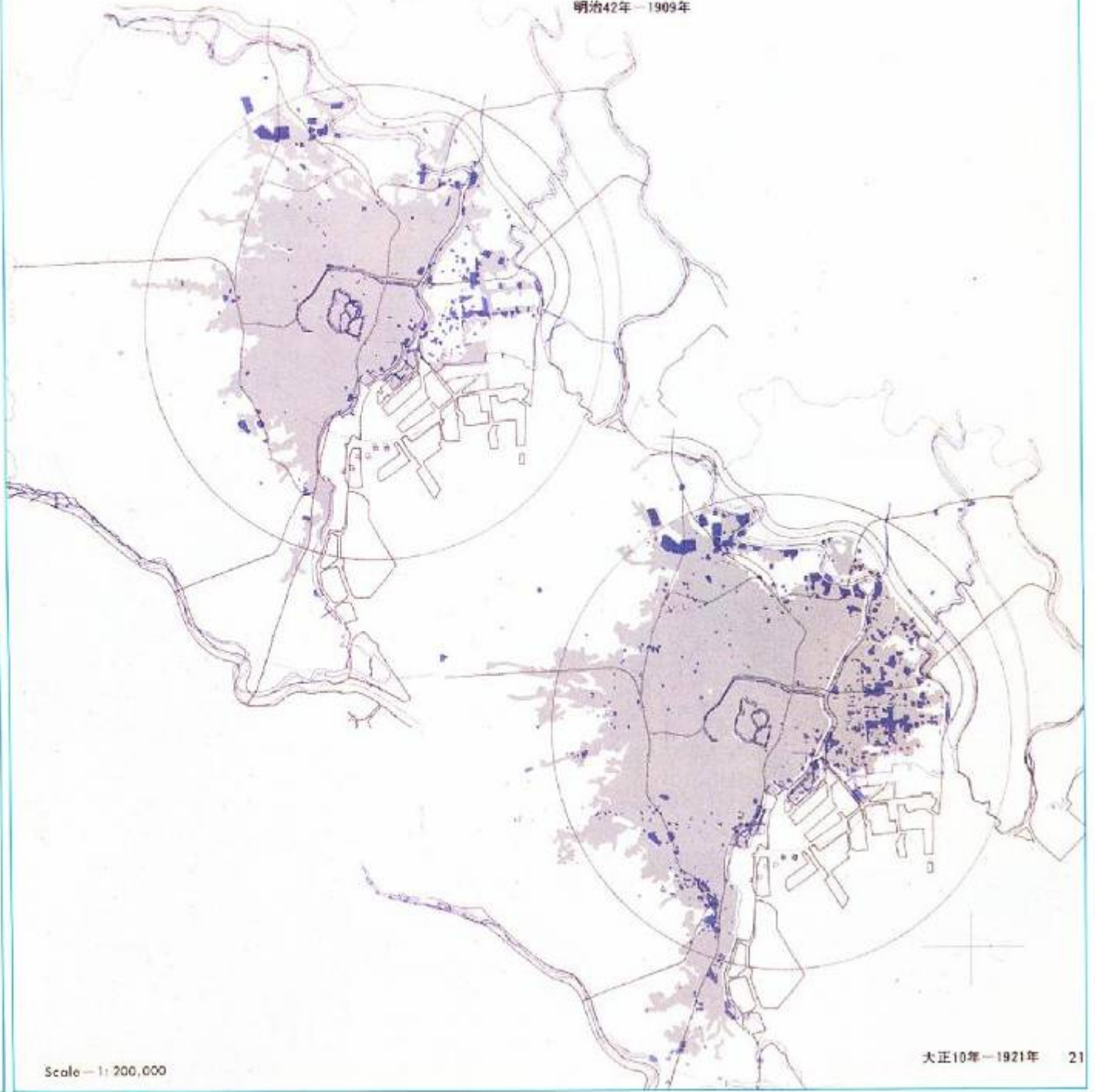
Paper mill in Oji



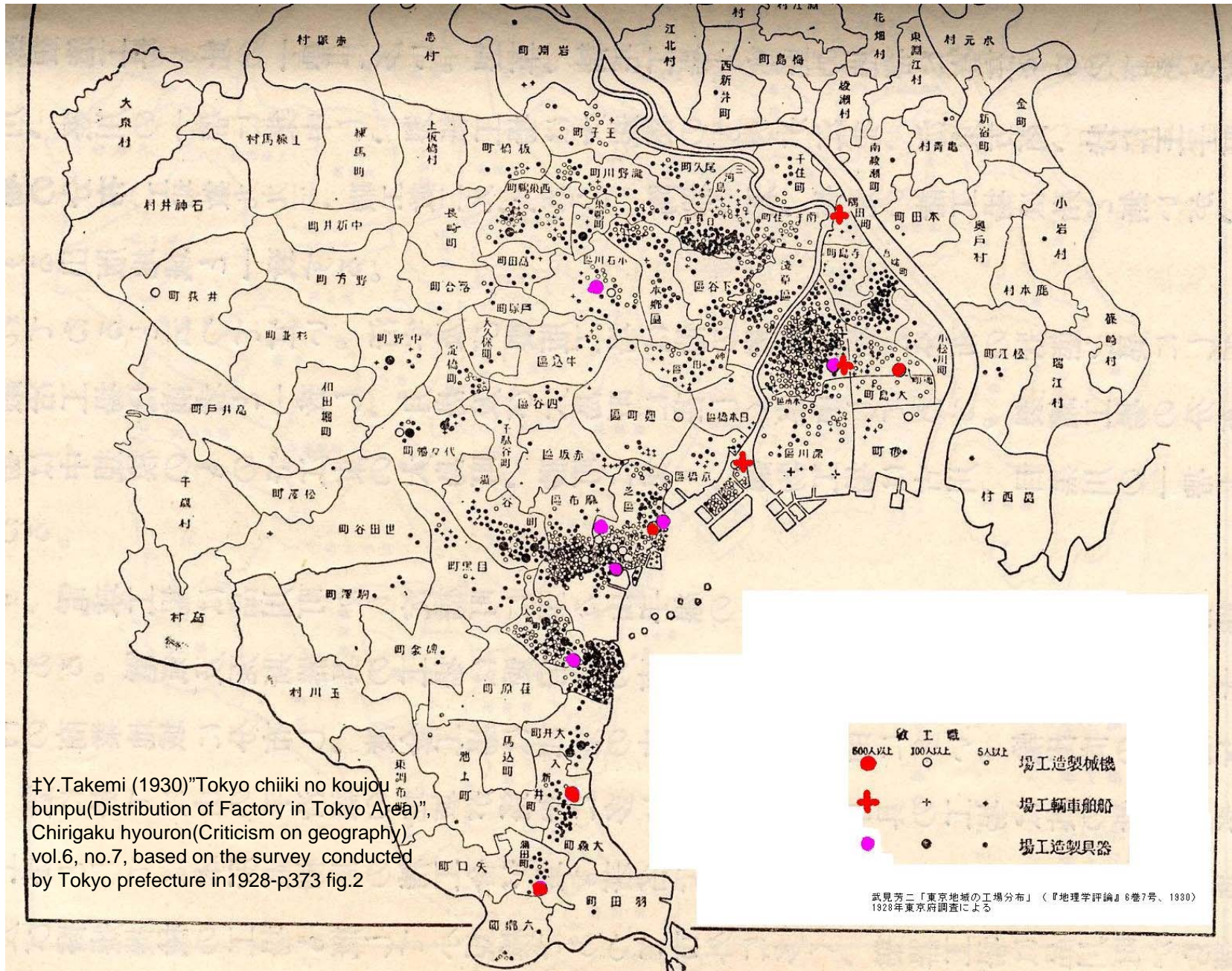
‡ From *Koshashin de Miru Edo kara Tokyo* (From Edo to Tokyo in Old Photographs), edited by Takeshi Ozawa and Masao Suzuki (Sekai Bunkasha, 2001)

Distribution of factories in 1909, in 1921

†Nippon Sheet Glass Co., Ltd.
『SPACE MODULATOR』No.38



Machine tool producers in 1928



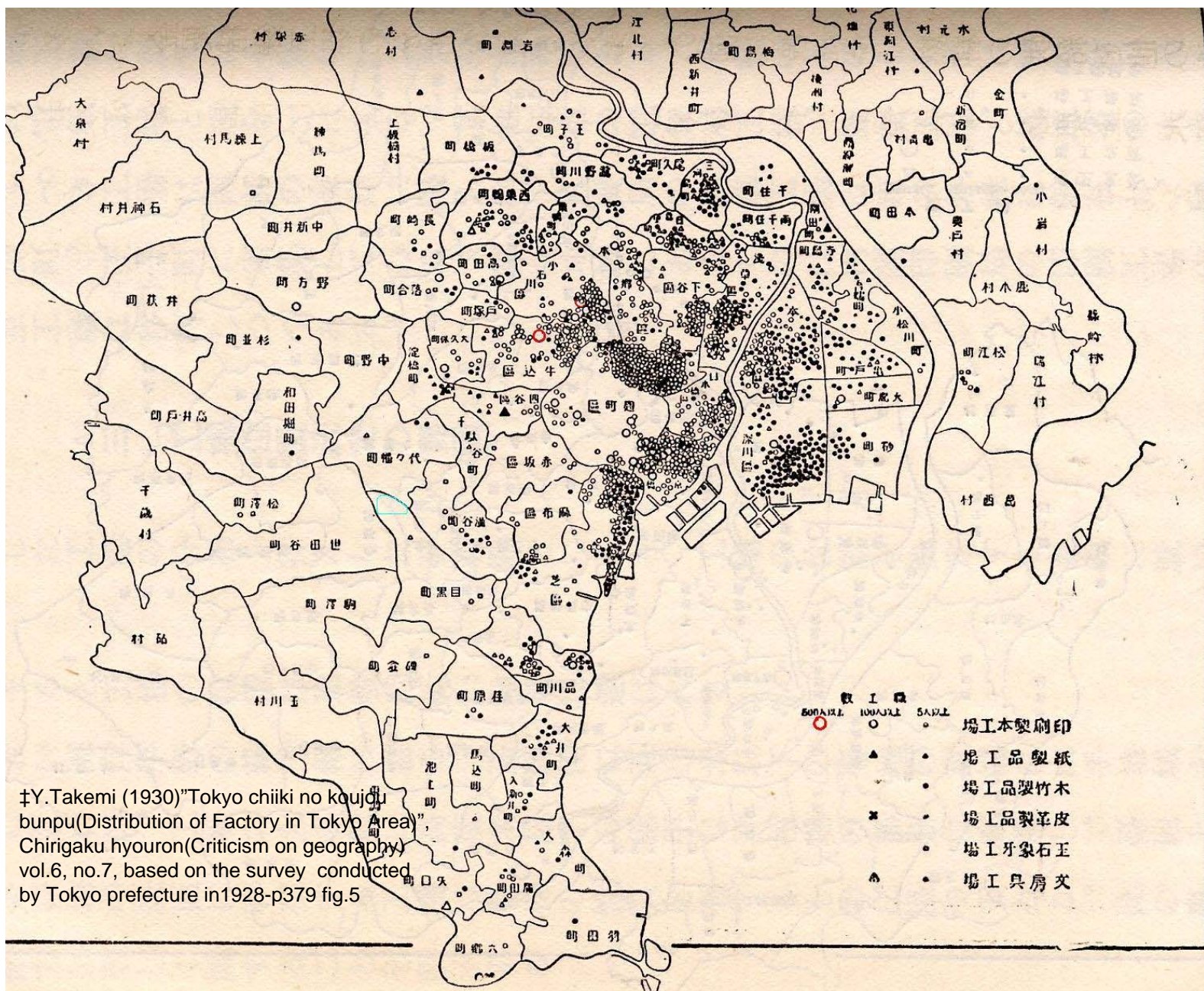
†Y. Takemi (1930) "Tokyo chiiki no koujou bunpu (Distribution of Factory in Tokyo Area)", Chirigaku hyouron (Criticism on geography), vol.6, no.7, based on the survey conducted by Tokyo prefecture in 1928-p373 fig.2

敏工廠		
● (Red Circle)	100人以上	場工造製械機
○ (White Circle)	5人以上	
+		場工輛車船舶
● (Purple Circle)		場工造製器具

武具芳二「東京地域の工場分布」(『地理学評論』6巻7号、1930) 1928年東京府調査による

Miscellaneous factories in 1928

圖 雜工場分布圖



†Y.Takemi (1930) "Tokyo chiiki no koujyou bunpu (Distribution of Factory in Tokyo Area)", Chirigaku hyouron (Criticism on geography) vol.6, no.7, based on the survey conducted by Tokyo prefecture in 1928-p379 fig.5

- | | | | |
|---|--------|---|--------|
| ● | 500人以上 | ● | 工場本製刷印 |
| ○ | 100人以上 | ● | 工場品製紙 |
| △ | 5人以上 | ● | 工場品製竹木 |
| × | | ● | 工場品製革皮 |
| ■ | | ● | 工場象牙石玉 |
| ◆ | | ● | 工場具房文 |

Former Itabashi gunpowder factory building

